

Алматы (7273)495-231
Ангарск (3955)60-70-56
Архангельск (8182)63-90-72
Астрахань (8512)99-46-04
Барнаул (3852)73-04-60
Белгород (4722)40-23-64
Благовещенск (4162)22-76-07
Брянск (4832)59-03-52
Владивосток (423)249-28-31
Владикавказ (8672)28-90-48
Владимир (4922) 49-43-18
Волгоград (844)278-03-48
Вологда (8172)26-41-59
Воронеж (473)204-51-73
Екатеринбург (343)384-55-89

Ижевск (3412)26-03-58
Иваново (4932)77-34-06
Иркутск (395)279-98-46
Казань (843)206-01-48
Калининград (4012)72-03-81
Калуга (4842)92-23-67
Кемерово (3842)65-04-62
Киров (8332)68-02-04
Коломна (4966)23-41-49
Кострома (4942)77-07-48
Краснодар (861)203-40-90
Красноярск (391)204-63-61
Курск (4712)77-13-04
Курган (3522)50-90-47
Липецк (4742)52-20-81

Магнитогорск (3519)55-03-13
Москва (495)268-04-70
Мурманск (8152)59-64-93
Набережные Челны (8552)20-53-41
Нижний Новгород (831)429-08-12
Новокузнецк (3843)20-46-81
Ноябрьск (3496)41-32-12
Новосибирск (383)227-86-73
Омск (3812)21-46-40
Орел (4862)44-53-42
Оренбург (3532)37-68-04
Пенза (8412)22-31-16
Петрозаводск (8142)55-98-37
Псков (8112)59-10-37
Пермь (342)205-81-47

Ростов-на-Дону (863)308-18-15
Рязань (4912)46-61-64
Самара (846)206-03-16
Саранск (8342)22-96-24
Санкт-Петербург (812)309-46-40
Саратов (845)249-38-78
Севастополь (8692)22-31-93
Симферополь (3652)67-13-56
Смоленск (4812)29-41-54
Сочи (862)225-72-31
Ставрополь (8652)20-65-13
Сыктывкар (8212)25-95-17
Сургут (3462)77-98-35
Тамбов (4752)50-40-97
Тверь (4822)63-31-35

Тольяти (8482)63-91-07
Томск (3822)98-41-53
Тула (4872)33-79-87
Тюмень (3452)66-21-18
Улан-Удэ (3012)59-97-51
Ульяновск (8422)24-23-59
Уфа (347)229-48-12
Хабаровск (4212)92-98-04
Чебоксары (8352)28-53-07
Челябинск (351)202-03-61
Череповец (8202)49-02-64
Чита (3022)38-34-83
Якутск (4112)23-90-97
Ярославль (4852)69-52-93

Киргизия (996)312-96-26-47

Россия (495)268-04-70

Казахстан (772)734-952-31

<https://cleaver.nt-rt.ru> || cea@nt-rt.ru

Образовательные наборы



Equipment Sets for Teaching Laboratories

SKU: LABSET

- Complete sets for Electrophoresis Education
- Includes electrophoresis tanks and power supply
- Includes pipettes for sample loading

The Education Lab sets from Cleaver Scientific are complete low cost DNA electrophoresis kits. This kit contains all the hardware required to run DNA gels (except the reagents/consumables)

Lab Set 1 Includes:

- nanoPAC-300P, 2 outlet power supply
- Mini Gel Tank, MSMINI10 X 2
- Cleaver Pipette -Volume; 2 – 20ul, CV20 X 2
- MS7-8-1 X 8 (Gel tank Combs)
- CSL-EDUPACK Reagents kit

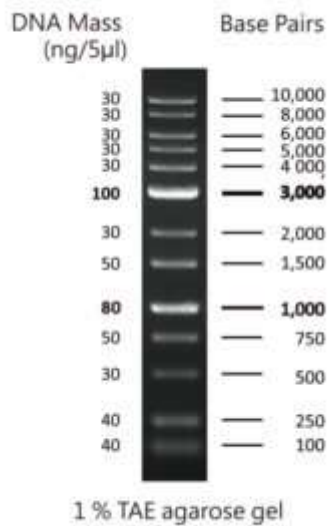
Lab Set 2 Includes:

- PowerPro 300, 5 outlet power supply-
- Mini Gel Tank, MSMINI10 X 4
- Cleaver Pipette -Volume; 2 – 20ul, CV20 X 4
- MS7-8-1 X 16 (Gel tank Combs)
- CSL-EDUPACK Reagents kit

This unit has a 12 month limited warranty, for more information, consult our terms and conditions.

[SPECIFICATIONS](#)

SKU	LABSET1	LABSET2
Includes Power Supply	Yes	Yes
Technique	Electrophoresis Education	Electrophoresis Education
Package Includes	MS7-8-1, CSL-EDUPACK, NANOPAC-300P, CV20, MSMINI10	MS7-8-1, CSL-EDUPACK, CV20, MSMINI10, POWERPRO300



Education reagent package

SKU: **CSL-EDUPACK**

- 5g Agarose x 3
- TBE Buffer (2 pouches)
- 1 KB Markers x 2
- Runsafe DNA Stain

New from Cleaver Scientific is a complete low cost DNA electrophoresis Reagent kit. This kit contains everything required for 20 mini DNA gels in one handy package.

Includes:

- 5g Agarose x 3
- TBE Buffer (2 pouches)
- 1 KB Markers x 2
- Runsafe DNA Stain

This unit has a 12 month limited warranty, for more information, consult our terms and conditions.

Product Includes: Agarose, TBE muffer, DNA marker and DNA stain

DNA Experiment Kit

SKU: CSLDNAKIT1

- Safe DNA Kit
- Samples can be viewed on safe blue light devices
- Simple to run
- Teaches principles of Gel Electrophoresis

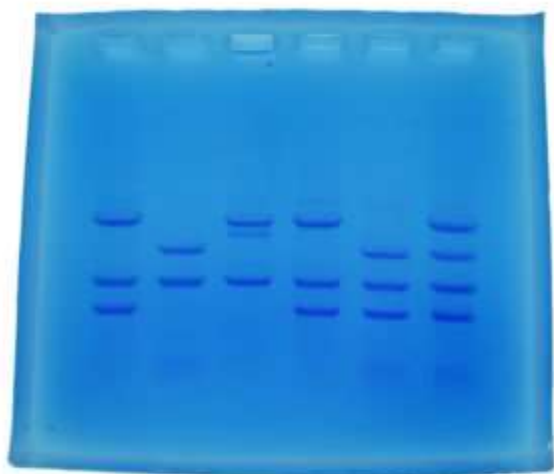
CLEAVER STARTER KIT □ DNA

This simple kit will enable you to teach the principles behind gel electrophoresis. The kit contains five DNA samples labelled A to E, two of which are identical, with enough reagents to run two sets of six gels. The students will be able to run their own agarose gel and view the DNA after the samples have migrated through the gel. The DNA samples can be viewed on a standard UV transilluminator or using the totally safe blue light LED devices.

Stable for up to 6 months at room temperature and 12 months if kept in the fridge at 4°C

Contents: DNA samples, agarose powder, electrophoresis buffer and Mini Fixed volume pipette

This unit has a 12 month limited warranty, for more information, consult our terms and conditions.



DNA Fingerprinting – Electrophoresis Education kit

SKU: BB101

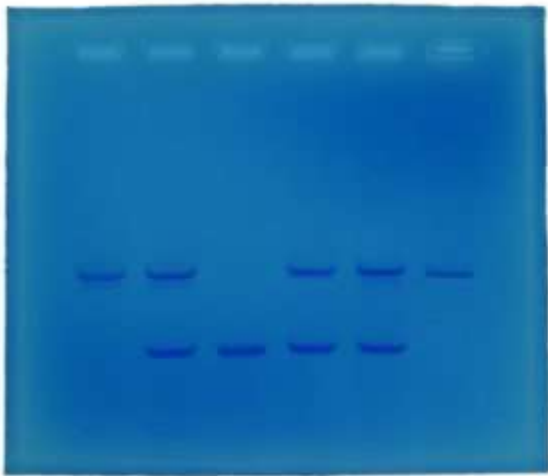
- Perfect for 1 hour lessons
- Introduce students to DNA and forensic science
- Works perfectly with Cleaver Scientific equipment!

Our DNA fingerprinting kit is the perfect tool to introduce students to the world of electrophoresis and forensic science. DNA fingerprinting is a laboratory technique used to establish a link between biological evidence and a suspect in a criminal investigation. A DNA sample taken from a crime scene is compared with a DNA sample from a suspect. If the two DNA profiles are a match, then the evidence came from that suspect. Conversely, if the two DNA profiles do not match, then the evidence cannot have come from the suspect.

Each kit contains DNA, agarose gel, electrophoresis buffer and DNA stain enough for 8 groups of students to cast and run the experiment and visualise the DNA separation. The gel takes approximately 5 minutes to load, 30 minutes to run and 15 minutes to stain, meaning the whole experiment can be completed in a one hour lesson, with convenient incubation periods for scientific discussion and teaching. Students will solve a crime using an unknown DNA sample from the crime scene and a series of suspects!

All you need is a horizontal electrophoresis system, power supply and pipettes all available from Cleaver Scientific.

This unit has a 12 month limited warranty, for more information, consult our terms and conditions



Cystic Fibrosis – Electrophoresis Education kit

SKU: **BB102**

Cystic Fibrosis is one of the most common genetic conditions in the UK. In this educational kit, students will learn about the basis of the disease, and run an agarose gel to separate DNA samples from healthy patients, carriers of the disease and CF patients.

Each kit included enough DNA, agarose gel, electrophoresis buffer and DNA stain for up to 8 groups of students (8 gels). All you need is a horizontal electrophoresis system, power supply and pipettes, all available from Cleaver Scientific.

This unit has a 12 month limited warranty, for more information, consult our terms and conditions.



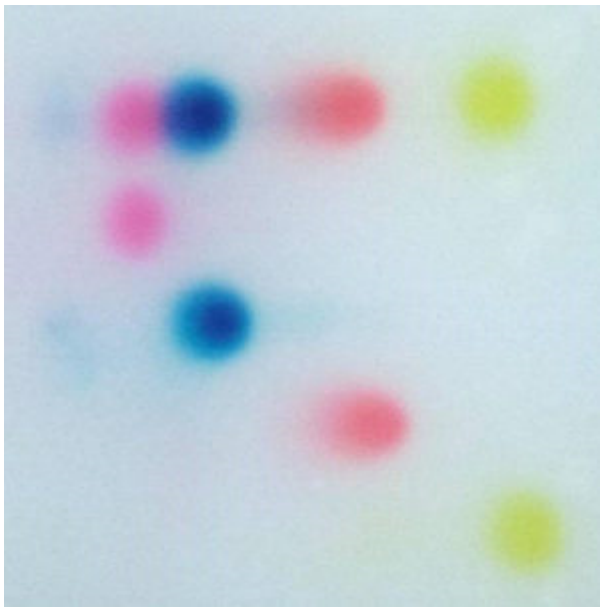
Paternity Testing – Electrophoresis Education kit

SKU: **BB103**

In this experiment, DNA from a mother, child and 2 possible fathers is separated by electrophoresis to determine the paternity of the child. The human DNA is simulated with a series of unique fragments that form a profile for each sample, allowing students to identify the father based on the mother and child's separation profiles.

This kit includes DNA, Agarose, electrophoresis buffer and DNA stain for 8 student groups. All you need a horizontal electrophoresis system, power supply and pipettes all available from Cleaver Scientific.

This unit has a 12 month limited warranty, for more information, consult our terms and conditions.



Dye Experiment Kit

SKU: **CSLDYEKIT1**

- Safe Dye Kit
- Simple to run
- Teaches principles of Gel Electrophoresis

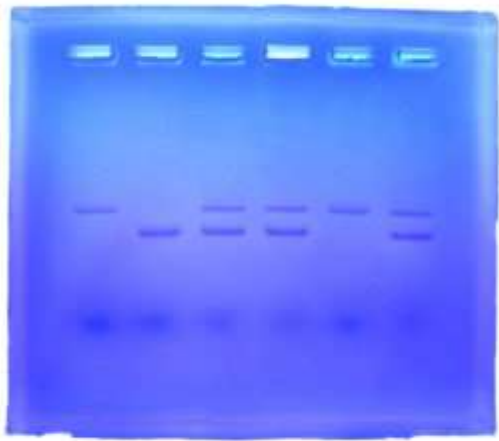
CLEAVER STARTER KIT □ DYE

This simple kit will enable you to teach the principles behind gel electrophoresis without the need to view the samples on a UV or blue light transilluminator. The kit contains six dye samples labelled A to F with enough reagents to run two sets of six gels. Vial A contains a dye marker consisting of 5 dyes. The other vials B to F contain a single dye. When the samples are loaded into a gel and run on an electrophoresis unit the students will be able to watch the different coloured dyes separate by the size of the molecules, so simulating how DNA separates by different molecular weight.

Stable for up to 6 months at room temperature and 12 months if kept in the fridge at 4°C

Contents: dye samples, agarose powder, electrophoresis buffer and Mini Fixed volume pipette.

This unit has a 12 month limited warranty, for more information, consult our terms and conditions.



Breast Cancer Genetics – Electrophoresis Education kit

SKU: **BB104**

- Whole experiment takes less than 1 hour.
- Great for introducing genetic diseases and genetic screening to students
- Works perfectly with Cleaver Scientific electrophoresis equipment

Breast cancer is the most common type of cancer. About 5-10% of all breast cancers are inherited. Mutations in the breast cancer 1 (BRCA1) gene greatly increase the risk of developing breast and ovarian cancer. This gene is found on chromosome 17 and is normally responsible for DNA repair. It is therefore called a tumour suppressor gene. Mutations in BRCA1 are dominant and so the presence of one copy of a mutated form can cause an increased risk of cancer.

This experiment will test DNA of members of a family where the grandmother (generation 2) and her daughter (generation 3) both died of breast cancer. The deceased women had a mutation in their BRCA1 gene.

Each kit included enough DNA, agarose gel, electrophoresis buffer and DNA stain for up to 8 groups of students (8 gels). All you need is a horizontal electrophoresis system, power supply and pipettes, all available from Cleaver Scientific

This unit has a 12 month limited warranty, for more information, consult our terms and conditions.

Алматы (7273)495-231
Ангарск (3955)60-70-56
Архангельск (8182)63-90-72
Астрахань (8512)99-46-04
Барнаул (3852)73-04-60
Белгород (4722)40-23-64
Благовещенск (4162)22-76-07
Брянск (4832)59-03-52
Владивосток (423)249-28-31
Владикавказ (8672)28-90-48
Владимир (4922) 49-43-18
Волгоград (844)278-03-48
Вологда (8172)26-41-59
Воронеж (473)204-51-73
Екатеринбург (343)384-55-89

Ижевск (3412)26-03-58
Иваново (4932)77-34-06
Иркутск (395)279-98-46
Казань (843)206-01-48
Калининград (4012)72-03-81
Калуга (4842)92-23-67
Кемерово (3842)65-04-62
Киров (8332)68-02-04
Коломна (4966)23-41-49
Кострома (4942)77-07-48
Краснодар (861)203-40-90
Красноярск (391)204-63-61
Курск (4712)77-13-04
Курган (3522)50-90-47
Липецк (4742)52-20-81

Киргизия (996)312-96-26-47

Магнитогорск (3519)55-03-13
Москва (495)268-04-70
Мурманск (8152)59-64-93
Набережные Челны (8552)20-53-41
Нижний Новгород (831)429-08-12
Новокузнецк (3843)20-46-81
Ноябрьск (3496)41-32-12
Новосибирск (383)227-86-73
Омск (3812)21-46-40
Орел (4862)44-53-42
Оренбург (3532)37-68-04
Пенза (8412)22-31-16
Петрозаводск (8142)55-98-37
Псков (8112)59-10-37
Пермь (342)205-81-47

Россия (495)268-04-70

Ростов-на-Дону (863)308-18-15
Рязань (4912)46-61-64
Самара (846)206-03-16
Саранск (8342)22-96-24
Санкт-Петербург (812)309-46-40
Саратов (845)249-38-78
Севастополь (8692)22-31-93
Симферополь (3652)67-13-56
Смоленск (4812)29-41-54
Сочи (862)225-72-31
Ставрополь (8652)20-65-13
Сыктывкар (8212)25-95-17
Сургут (3462)77-98-35
Тамбов (4752)50-40-97
Тверь (4822)63-31-35

Казахстан (772)734-952-31

Тольяти (8482)63-91-07
Томск (3822)98-41-53
Тула (4872)33-79-87
Тюмень (3452)66-21-18
Улан-Удэ (3012)59-97-51
Ульяновск (8422)24-23-59
Уфа (347)229-48-12
Хабаровск (4212)92-98-04
Чебоксары (8352)28-53-07
Челябинск (351)202-03-61
Череповец (8202)49-02-64
Чита (3022)38-34-83
Якутск (4112)23-90-97
Ярославль (4852)69-52-93