

Алматы (7273)495-231
Ангарск (3955)60-70-56
Архангельск (8182)63-90-72
Астрахань (8512)99-46-04
Барнаул (3852)73-04-60
Белгород (4722)40-23-64
Благовещенск (4162)22-76-07
Брянск (4832)59-03-52
Владивосток (423)249-28-31
Владикавказ (8672)28-90-48
Владимир (4922) 49-43-18
Волгоград (844)278-03-48
Вологда (8172)26-41-59
Воронеж (473)204-51-73
Екатеринбург (343)384-55-89

Ижевск (3412)26-03-58
Иваново (4932)77-34-06
Иркутск (395)279-98-46
Казань (843)206-01-48
Калининград (4012)72-03-81
Калуга (4842)92-23-67
Кемерово (3842)65-04-62
Киров (8332)68-02-04
Коломна (4966)23-41-49
Кострома (4942)77-07-48
Краснодар (861)203-40-90
Красноярск (391)204-63-61
Курск (4712)77-13-04
Курган (3522)50-90-47
Липецк (4742)52-20-81

Магнитогорск (3519)55-03-13
Москва (495)268-04-70
Мурманск (8152)59-64-93
Набережные Челны (8552)20-53-41
Нижний Новгород (831)429-08-12
Новокузнецк (3843)20-46-81
Ноябрьск (3496)41-32-12
Новосибирск (383)227-86-73
Омск (3812)21-46-40
Орел (4862)44-53-42
Оренбург (3532)37-68-04
Пенза (8412)22-31-16
Петрозаводск (8142)55-98-37
Псков (8112)59-10-37
Пермь (342)205-81-47

Ростов-на-Дону (863)308-18-15
Рязань (4912)46-61-64
Самара (846)206-03-16
Саранск (8342)22-96-24
Санкт-Петербург (812)309-46-40
Саратов (845)249-38-78
Севастополь (8692)22-31-93
Симферополь (3652)67-13-56
Смоленск (4812)29-41-54
Сочи (862)225-72-31
Ставрополь (8652)20-65-13
Сыктывкар (8212)25-95-17
Сургут (3462)77-98-35
Тамбов (4752)50-40-97
Тверь (4822)63-31-35

Тольяти (8482)63-91-07
Томск (3822)98-41-53
Тула (4872)33-79-87
Тюмень (3452)66-21-18
Улан-Удэ (3012)59-97-51
Ульяновск (8422)24-23-59
Уфа (347)229-48-12
Хабаровск (4212)92-98-04
Чебоксары (8352)28-53-07
Челябинск (351)202-03-61
Череповец (8202)49-02-64
Чита (3022)38-34-83
Якутск (4112)23-90-97
Ярославль (4852)69-52-93

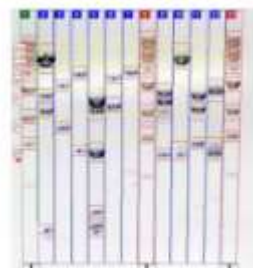
Киргизия (996)312-96-26-47

Россия (495)268-04-70

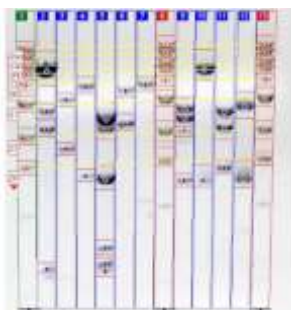
Казахстан (772)734-952-31

<https://cleaver.nt-rt.ru> || cea@nt-rt.ru

Программное обеспечение для анализа геля



TotalLab analysis software options are available for quantitative gel analysis following gel documentation. Each software option offers the highest level of automation currently available and guides the user step by step through the analysis process. A user-friendly interface is split into four parts allowing the user to view within a single screen every aspect of gel quantitation, including the gel image, lane and band profiles, analysis data and the help menu.



CLIQS – Core Laboratory Image Quantification Software

SKU: CLIQ

- Automatic and manual lane creation
- Background subtraction to remove noise
- Detect bands automatically
- Molecular Size calculation

All of your essential image analysis software in one simple, easy-to-use package. It supports fundamental research in a variety of areas, including:

- Molecular Biology
- Microbiology
- Biochemistry
- Virology
- Cell Biology
- Genetics
- Proteomics
- Evolutionary Biology
- Neuroscience

Perfect for:

- Quantitative 1D gel analysis for Protein, DNA and RNA research
- Quantitative Western blots with multiplex analysis
- Colony counter and analysis for protein/antibody arrays
- Analysing a wide variety of common image formats from all scanners & gel docs
- 21CFR compliance for GLP/GMP laboratories Automated detection algorithms for fast and accurate image analysis
- Easy to use and rapid automated analysis of data
- Generate reports and publication quality images of your results

All of your essential image analysis software in one simple, easy-to-use package.

- 1D gel electrophoresis analysis of your DNA, RNA and protein samples including Western blot analysis with loading controls
- High-density DNA and protein arrays
- Colony counting and basic 2D spot measurement
- General feature-based image analysis
- 21 CFR Part 11 version for your GMP/GLP requirements

CLIQS is a simple affordable software to analyse separation and quantification of your DNA, RNA and protein samples including multiplex western blots. You can import a wide range of image file formats, see the results on the raw image and record the measurements in exportable data tables as you apply each of the steps here.

Image pre-processing

- Invert colours
- Flip, crop and rotate.
- Optimise contrast and brightness

Basic 1D gel quantification

- Automatic and manual lane creation
- Background subtraction to remove noise
- Detect bands automatically
- Molecular Size calculation

Advanced 1D gel quantification

- Gaussian fit to bands.
- Quantity Calibration
- Normalisation using bands, lanes and loading controls for multiplex gels

Compare lanes across gel image

- Rf calibration
- Single gel lane matching
- Band Matrix table
- Dendrogram creation

Export and share results

- Annotate image
- 3D view
- Clip Gallery to capture publication quality images
- PDF analysis reports
- Export data tables to Excel

Specification for CLIQS

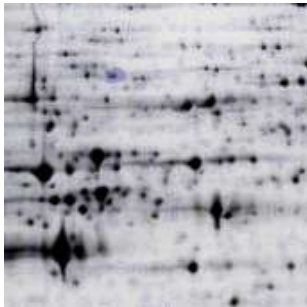
Operating systems: Windows XP, Windows Vista, Windows 7, 8 and 10.

Processor: 1.4 GHz

Memory: Minimum 1Gb, recommended 2Gb

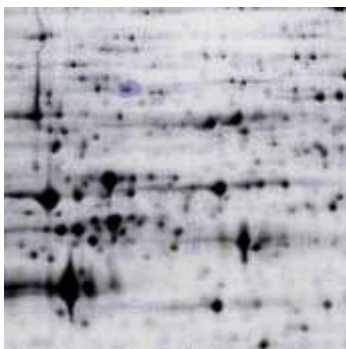
Free hard disk space: Recommended 5Gb

File formats: .tif,.gel,.jpg,.bmp,.gif,.png,.img (Fuji)



Additional License for SameSpots

SKU: **SAMESPOTS-AL**



SameSpots – Professional 2D Gel Analysis Software

SKU: **SAMESPOTS**

Fast, easy to use and reproducible differential protein expression analysis. It is simple to install and apply to support your research in:

- Proteomics
- Biomarker Discovery
- Cancer Research
- Neuroscience
- Food Research
- Evolutionary Biology

2D Gel Image Analysis

2D gel electrophoresis (2-DE) is a key technique for molecular biology. With technology improvements 2-DE has become accessible, affordable and easy to implement. The images you capture from 2-DE gels are quantitative maps of intact proteins that allow you to characterise samples by:

- Relative protein expression changes based on experimental changes
- 2D Western blotting patterns compared to 2-DE protein gels
- pI and molecular weight estimations
- Protein-protein interactions
- De novo sequencing and identification for organisms with incomplete genome sequences
- Post-translational modifications and protein isoforms

SameSpots overcomes the common problems you face using 2D gel electrophoresis for protein analysis such as lack of reproducibility in results, hours of tedious spot editing and confidence in the statistical significance of measuring protein expression changes.

SameSpots is simple to use and gives you fast, objective results for differential expression of intact proteins using 2-DE gels.

- **Simplicity.** You are guided through each step of the workflow, new users can get up and running with minimal training.
- **Speed.** Typical analysis times of less than 5 minutes per gel with single-stain or 2D DIGE images.
- **Objectivity.** A consistent analysis approach that is proven to give reproducible results between different users.
- **Statistical power.** Image alignment delivers 100% matching with no missing values in your data for valid multivariate statistics.

Алматы (7273)495-231
 Ангарск (3955)60-70-56
 Архангельск (8182)63-90-72
 Астрахань (8512)99-46-04
 Барнаул (3852)73-04-60
 Белгород (4722)40-23-64
 Благовещенск (4162)22-76-07
 Брянск (4832)59-03-52
 Владивосток (423)249-28-31
 Владикавказ (8672)28-90-48
 Владимир (4922) 49-43-18
 Волгоград (844)278-03-48
 Вологда (8172)26-41-59
 Воронеж (473)204-51-73
 Екатеринбург (343)384-55-89

Ижевск (3412)26-03-58
 Иваново (4932)77-34-06
 Иркутск (395)279-98-46
 Казань (843)206-01-48
 Калининград (4012)72-03-81
 Калуга (4842)92-23-67
 Кемерово (3842)65-04-62
 Киров (8332)68-02-04
 Коломна (4966)23-41-49
 Кострома (4942)77-07-48
 Краснодар (861)203-40-90
 Красноярск (391)204-63-61
 Курск (4712)77-13-04
 Курган (3522)50-90-47
 Липецк (4742)52-20-81

Киргизия (996)312-96-26-47

Магнитогорск (3519)55-03-13
 Москва (495)268-04-70
 Мурманск (8152)59-64-93
 Набережные Челны (8552)20-53-41
 Нижний Новгород (831)429-08-12
 Новокузнецк (3843)20-46-81
 Ноябрьск (3496)41-32-12
 Новосибирск (383)227-86-73
 Омск (3812)21-46-40
 Орел (4862)44-53-42
 Оренбург (3532)37-68-04
 Пенза (8412)22-31-16
 Петрозаводск (8142)55-98-37
 Псков (8112)59-10-37
 Пермь (342)205-81-47

Россия (495)268-04-70

Ростов-на-Дону (863)308-18-15
 Рязань (4912)46-61-64
 Самара (846)206-03-16
 Саранск (8342)22-96-24
 Санкт-Петербург (812)309-46-40
 Саратов (845)249-38-78
 Севастополь (8692)22-31-93
 Симферополь (3652)67-13-56
 Смоленск (4812)29-41-54
 Сочи (862)225-72-31
 Ставрополь (8652)20-65-13
 Сыктывкар (8212)25-95-17
 Сургут (3462)77-98-35
 Тамбов (4752)50-40-97
 Тверь (4822)63-31-35

Казахстан (772)734-952-31

Тольяти (8482)63-91-07
 Томск (3822)98-41-53
 Тула (4872)33-79-87
 Тюмень (3452)66-21-18
 Улан-Удэ (3012)59-97-51
 Ульяновск (8422)24-23-59
 Уфа (347)229-48-12
 Хабаровск (4212)92-98-04
 Чебоксары (8352)28-53-07
 Челябинск (351)202-03-61
 Череповец (8202)49-02-64
 Чита (3022)38-34-83
 Якутск (4112)23-90-97
 Ярославль (4852)69-52-93